

**TEXTILE**

**PACKAGING SOLUTIONS**

**INNOVATIVE, FLEXIBLE, SUSTAINED**

**ETILOG**  
innovative textile solutions



## Innovative packaging solutions for your components

Etilog s.r.o., with its headquarters located in Presov/Slovakia, is the specialist for all your textile packaging needs. As the European technology leader for textile packaging systems, our motivation is our enduring fascination with **innovation** and quality. You can count on us to answer all your textile packaging questions.

### Our Core Competencies:

- **Manufacturing and prototype production** of load carriers
- **Steel and custom load carriers** with textile compartments
- **Large load carriers** with textile compartments & pocket systems
- **Small load carriers** with textile compartments & pocket systems
- **Trays and bespoke intralogistics solutions** made with structured core panels
- Cable harness bags and cable threading devices for vehicular & appliance electronics
- **Hand carts and tugger train trolleys** with textile compartments and pockets systems
- **Pocket systems for conveyor bags**

We have 270 employees based at our sites in Presov and Svidnik. With some of the most modern textile machinery in Europe, we are capable of producing the following from our in-house capacity **every week**:

**Steel load carriers:** >500 Stk.  
**Large plastic load carriers:** >500 Stk.  
**Small load carriers:** >4.500 Stk.

For our customers, the name **Etilog** stands for state-of-the-art technology and innovation, as well as **superior and sustainable packaging systems**. To ensure the protection of your components, along with market-proven products, we also have a wide range of our own materials and textiles available. This enables our engineers to create safe and protective packaging for almost any type of component.







## Perfect protection during transport & handling

There are three fundamental pillars necessary for developing innovative and economically and sustainably sound packaging solutions: Experience, the constant pursuit of perfection, and creativity. Our developers possess all these characteristics. Equipped with the most modern CAD systems, flexible and rapid prototype production capabilities, and the newest 3D printing technology, we are the ideal partner to develop the correct packaging solutions for you.

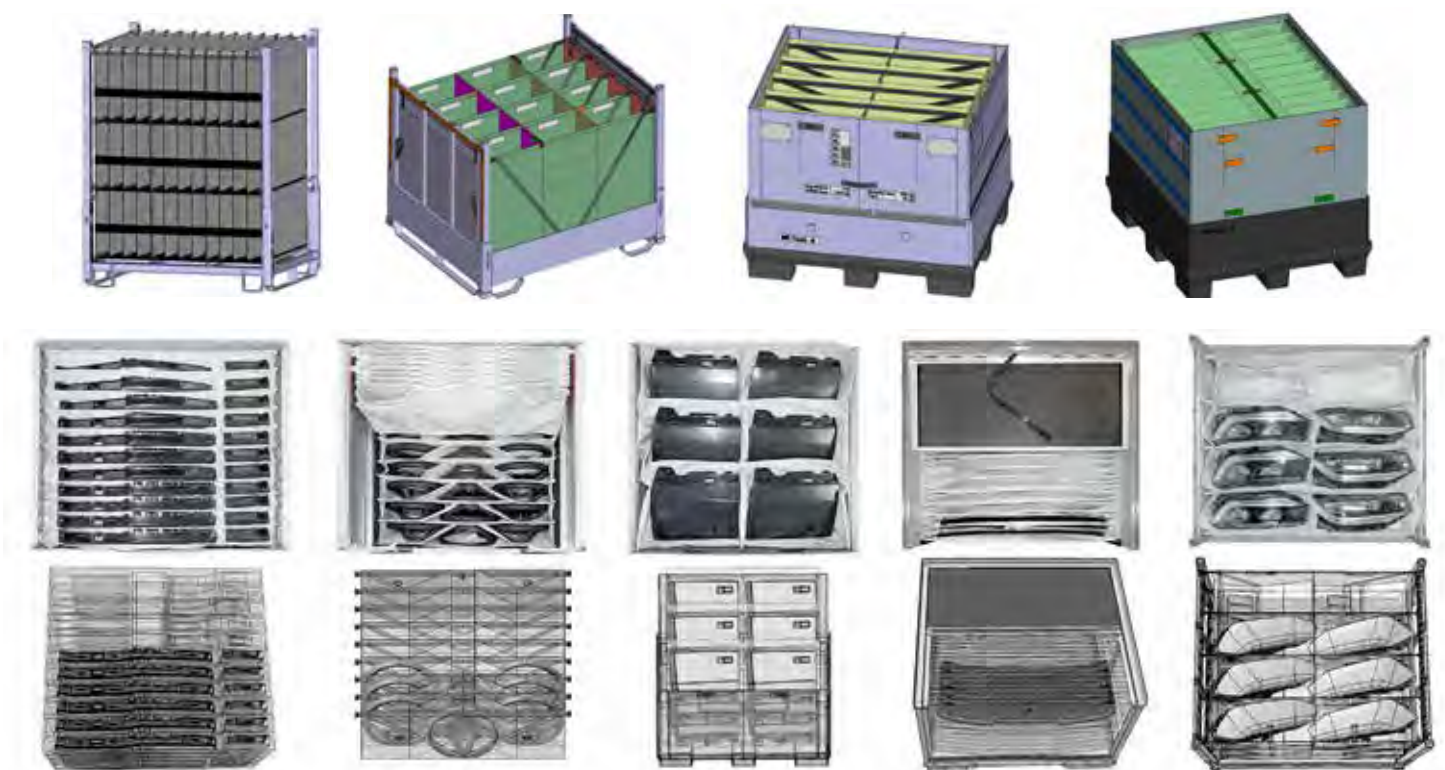
### Core Information of our Development Division:

- 7x Dassault Systems CATIA V5-6, 3x Siemens NX 12 Staff
- OEM CAD environment for the creation of customer-specific 2D/3D drafting + lists of parts
- Xioneer Industry 3D Printing System for live component position simulations in the container
- 8x JUKI LU sample machines to produce prototypes under full production series conditions
- Modular systems for the rapid & efficient construction of containers
- In-house analysis tools for FEM static testing
- In-house test laboratory equipped with a vibrating table, drop test apparatus, climatic chamber & load testing

### Why use Etilog for your Packaging Development?

**3D Concept Development:**  
**Packaging Consultation:**  
**Prototype Development:**  
**Component Availability Issues?**  
**Packaging Testing:**  
**Technology:**  
**Materials:**

**Free of charge** - 90% of all concepts are delivered within 5 working days  
**Free of charge and with no obligation** - in person and on-site  
**Quick and straightforward** - in most cases within 2-3 weeks  
**No problem** - thanks to our 3D printing systems  
**Diligent** - personal evaluation and validation in cooperation with your QA division  
**Superior** - let yourself be impressed by our innovative capabilities  
**Flexible & ideal** - thanks to our own material development division







### Innovative Packaging in serial production

Our manufacturing process uses the most state-of-the-art technology available – from the newest CNC cutting technology, to the largest site of JUKI LU long arm sewing machines in Europe, together with the most efficient assembly lines – we offer the full variety of textile packaging in both large and small scale production with the highest quality and delivered on-time. Our high levels of vertical integration make it possible for us to react quickly and adjust our capacity rapidly depending on your needs.

#### Core Information of our Production Capacity:

- >270 highly motivated direct employees
- 82 JUKI LU long arm sewing machine, >50 special machines for special applications
- GERBER Paragon CNC cutting system
- JUKI AMS & Bruce CNC automatic sewing machines for highly precise stitching
- Multi-level 100% quality assurance

#### Weekly In-house Capacity:

- |                              |             |
|------------------------------|-------------|
| Steel load carriers:         | >500 Stk.   |
| Large plastic load carriers: | >500 Stk.   |
| Small load carriers:         | >4.500 Stk. |







## Nesting, flexibility and maximum design freedom

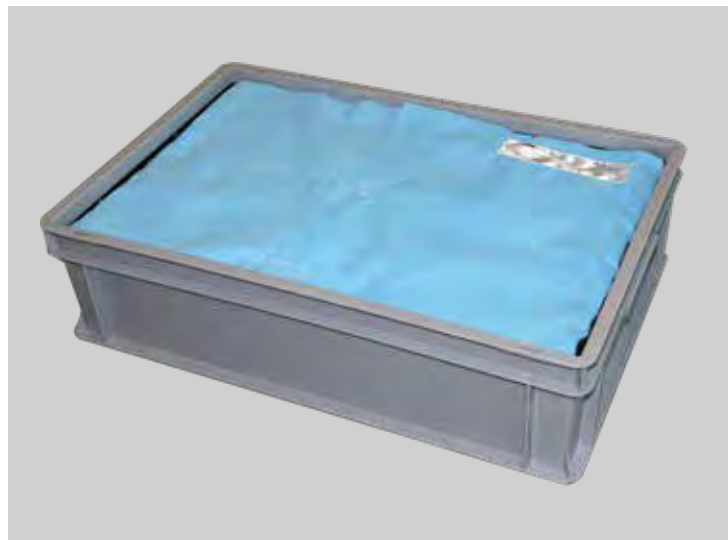
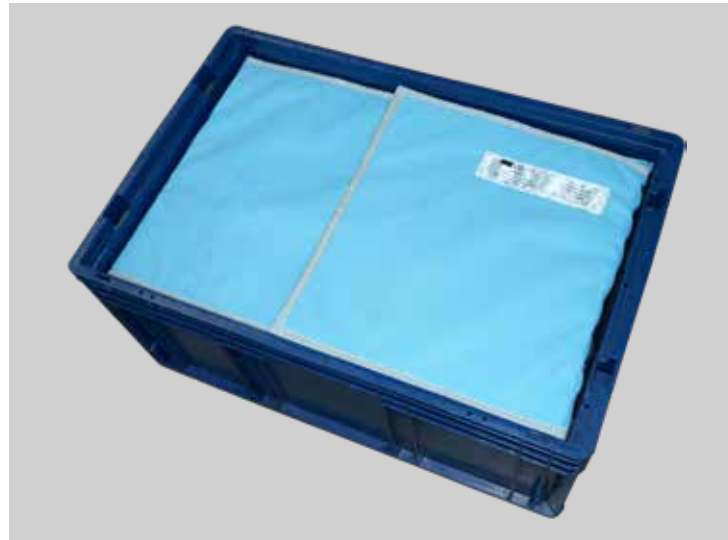
Textiles are materials that are perfectly suited to manufacturing flexible and complex components fixtures. Our pocket systems adapt to your components and enable high levels of packing density while providing ideal protection. You have the option of combining the various types of surface properties best suited to protecting the components you wish to package.

### The advantages of textile packaging solutions:

- High packing density
- Flexible component fixtures
- Best possible component protection
- Tool-free production
- Flexible textiles enable excellent foldability
- Creative design
- Rapid conception of prototypes







### Perfect for small and mid size parts

Together, small load carriers, stacking containers and trays create the ideal repackaging for small and mid-sized components. Our compartment solutions offer the perfect partitioning and protection for your components. Regardless of whether they are in a foldable SLC with retrofitted sliding panel frames for the compartments or bespoke trays manufactured using hollow-chamber panels – we have the right solution for all your requirements.

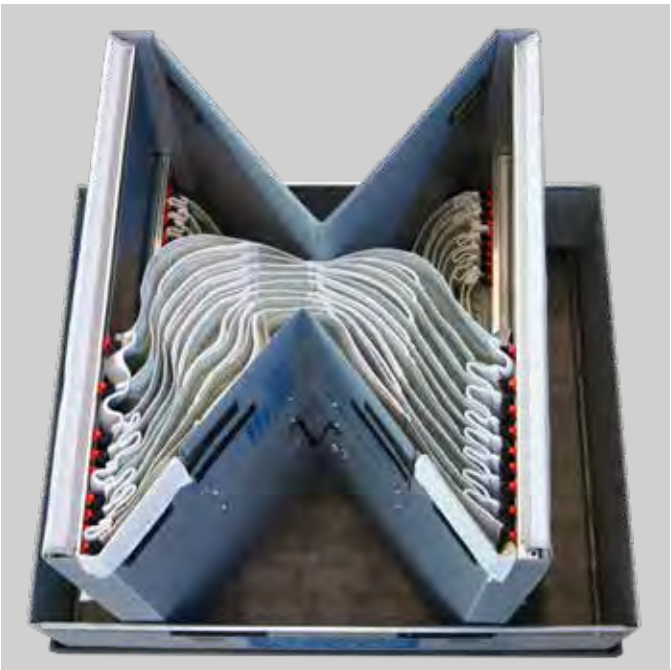






**Foldable lightweight containers with high utility value**

Our plastic large load carriers, together with textile-based solutions, provide ideal transport conditions for mid-to-large-sized components. Regardless of whether they can be adjusted to various positions or function as an insertion system with inserts slotted in from above, LLCs with compartments provide an excellent tare weight/payload ratio and are therefore a highly efficient form of packaging. Additionally, all our LLCs are foldable and can therefore be returned at a reduced load volume.





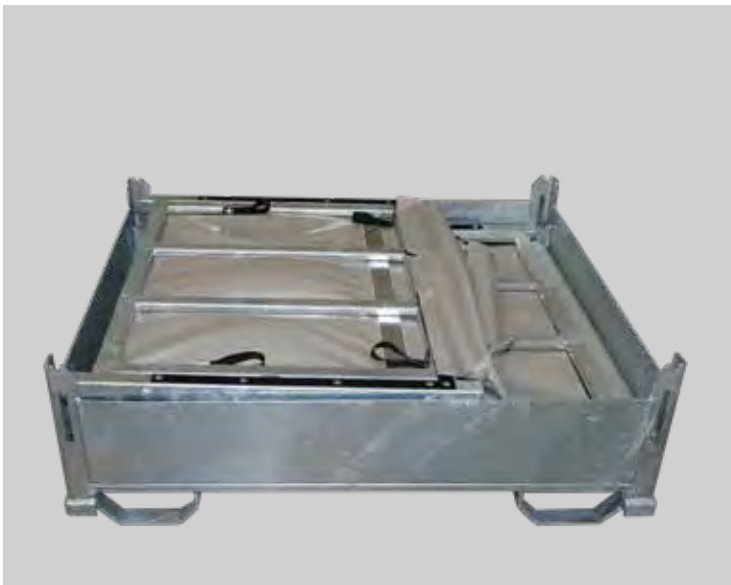
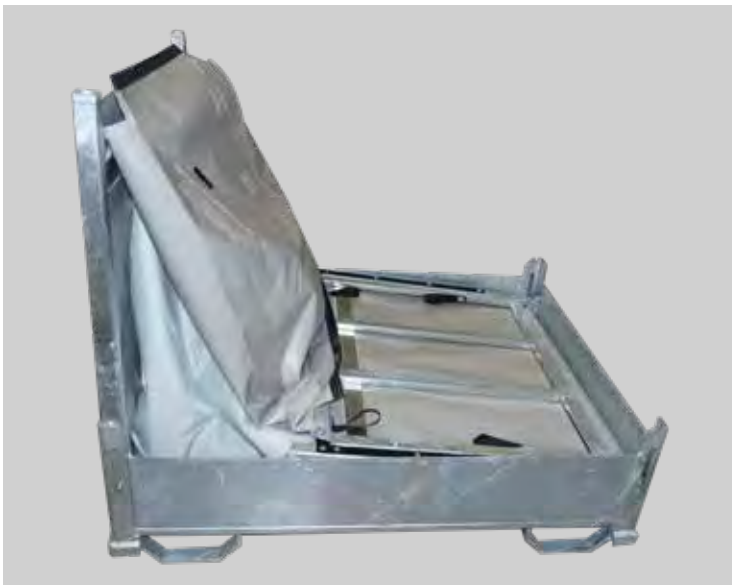
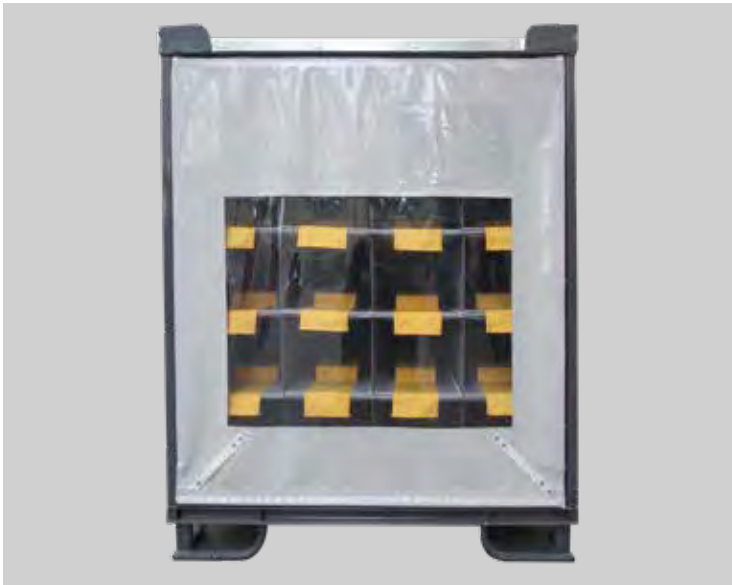


### Individual, robust & customizable

Steel load carriers with textile compartments together create a highly flexible and robust transport platform for all your needs. No other type of load carrier can be so customized to each individual task like a steel load carrier. The wide variety of dimensions available and their durability are only two of the many advantages they offer. Maximum customization coupled with the highest levels of stability make our steel load carriers the perfect transport solution for your components. You are free to choose from a range of surface coatings; from robust powder coating, liquid paint application, to hot-dip zinc coating – everything is possible.











### Perfect for your internal material flow

Textile compartments and component fixtures are also perfectly suited to the construction and manufacturing of internally used containers, tugger train trolleys and hand carts. Thanks to the flexible, tool-free designs, the small series of bespoke products can be manufactured very economically. We are also available to manufacture compartments for your existing fleet of modular tube or aluminum profile systems.





---

## **ETILOG, s.r.o.**

Strojnicka 9/A

080 06 Presov, Slovakia

Phone: +421/51 777 5325

E-mail: [info@etilog.com](mailto:info@etilog.com)

**[www.etilog.com](http://www.etilog.com)**

### **YOUR CONTACT:**

#### **ETILOG, s.r.o.**

Strojnicka 9/A

080 06 Presov, Slovakia

Phone: +421/51 777 5325

E-mail: [info@etilog.com](mailto:info@etilog.com)

**[www.etilog.com](http://www.etilog.com)**

---